



# MONARCH

---

## NETWORTH CAPITAL

*wealthcare redefined*

**FINANCIAL**  
MARKET SIMPLIFIED  
*wealthcare redefined*





## GENESIS OF A JOURNEY TO SIMPLIFY WEALTH MANAGEMENT

Monarch Network Capital is a strategic amalgamation of two leading financial service providers Monarch Group of Companies and Network Stock Broking Ltd. With more than 2 decades in devising and executing smarter financial products and strategies, we have emerged as one of the leading and reliable financial services provider. We have added more verticals to our business ranging from pure stock broking services and including the entire gamut of financial services such as primary market-ing operations, mutual funds, insurance and comprehensive financial planning.

Our constant focus is on scaling and upgrading the technology and infrastructure with an aim of providing the best services to the investors. We have always believed in building a knowledge bank to bring about a progressive change for all our customers and stakeholders. This sharing of financial knowledge has been adding more value to our clients' asset. It has also established us as a unique entity in this domain.



CORPORATE  
GROUP



## VISION & MISSION

### SEEING THE UNSEEN

To be recognized as a pioneer in providing financial services anchored with values of Innovation, Safety, Trust and Diversity.

### MARCHING AHEAD WITH A MISSION

As a leading investment company, we provide quality investment solutions and help our clients to achieve their goals. Our goal is to strive towards delivering a superior investment performance to meet the needs of our stakeholders by portraying the spirit of teamwork, efficiency and integrity.





## CLIENT FIRST

It's not just service that we offer. We deliver service that is customized and personalized by devising unobvious and smarter strategies.

We help our clients reach their financial goals and often exceed it. Technology is the tool that aids us in helping our clients.

At MNCL, we apply creative techniques & best research methodologies to provide profit maximizing & risk minimizing solutions for all our clients.



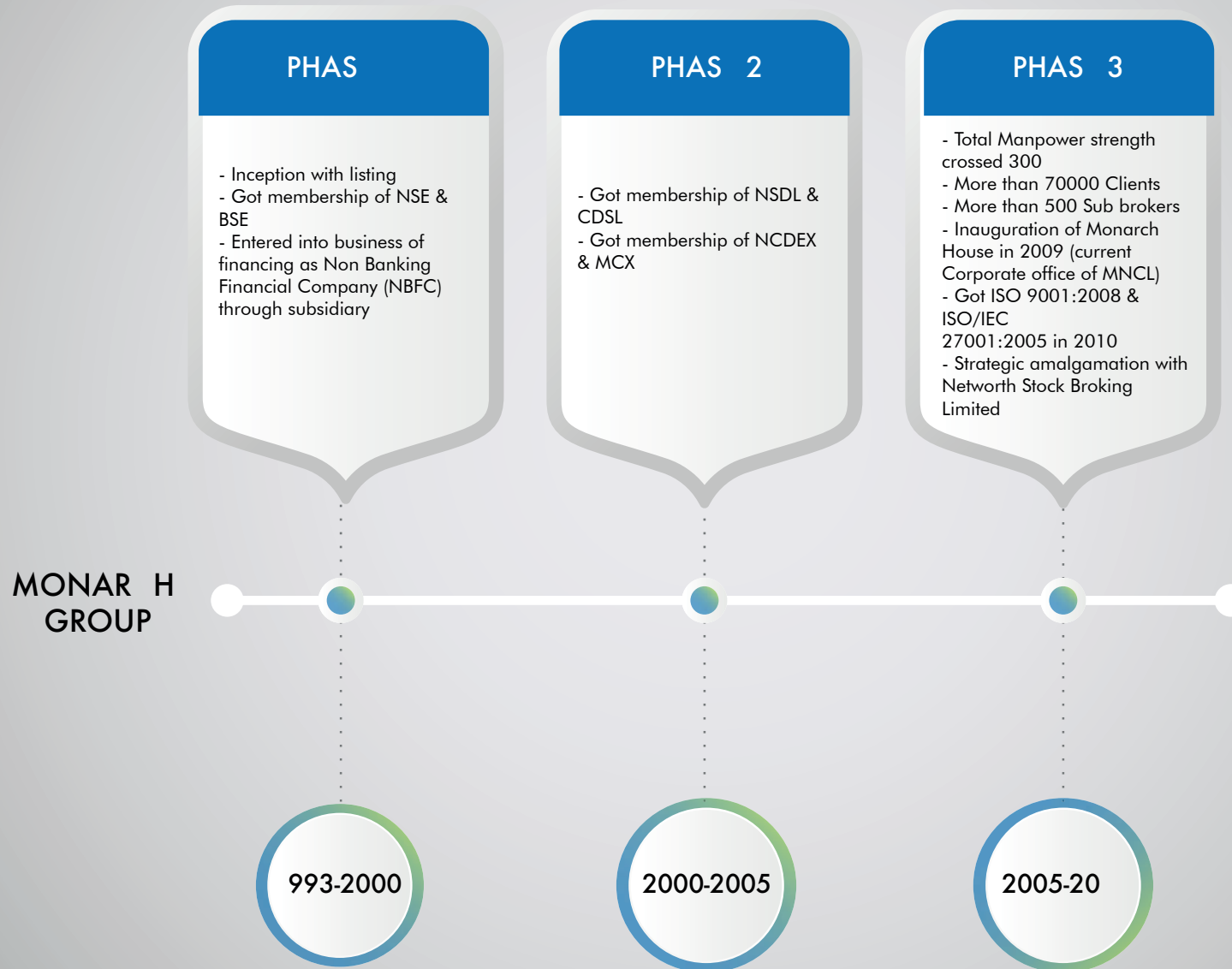
# LI NT FIRST

Since the merger, we have doubled up the size of our organization and operations with an aim to nurture and improve our innovations and to execute excellence in an increasingly competitive and volatile world.

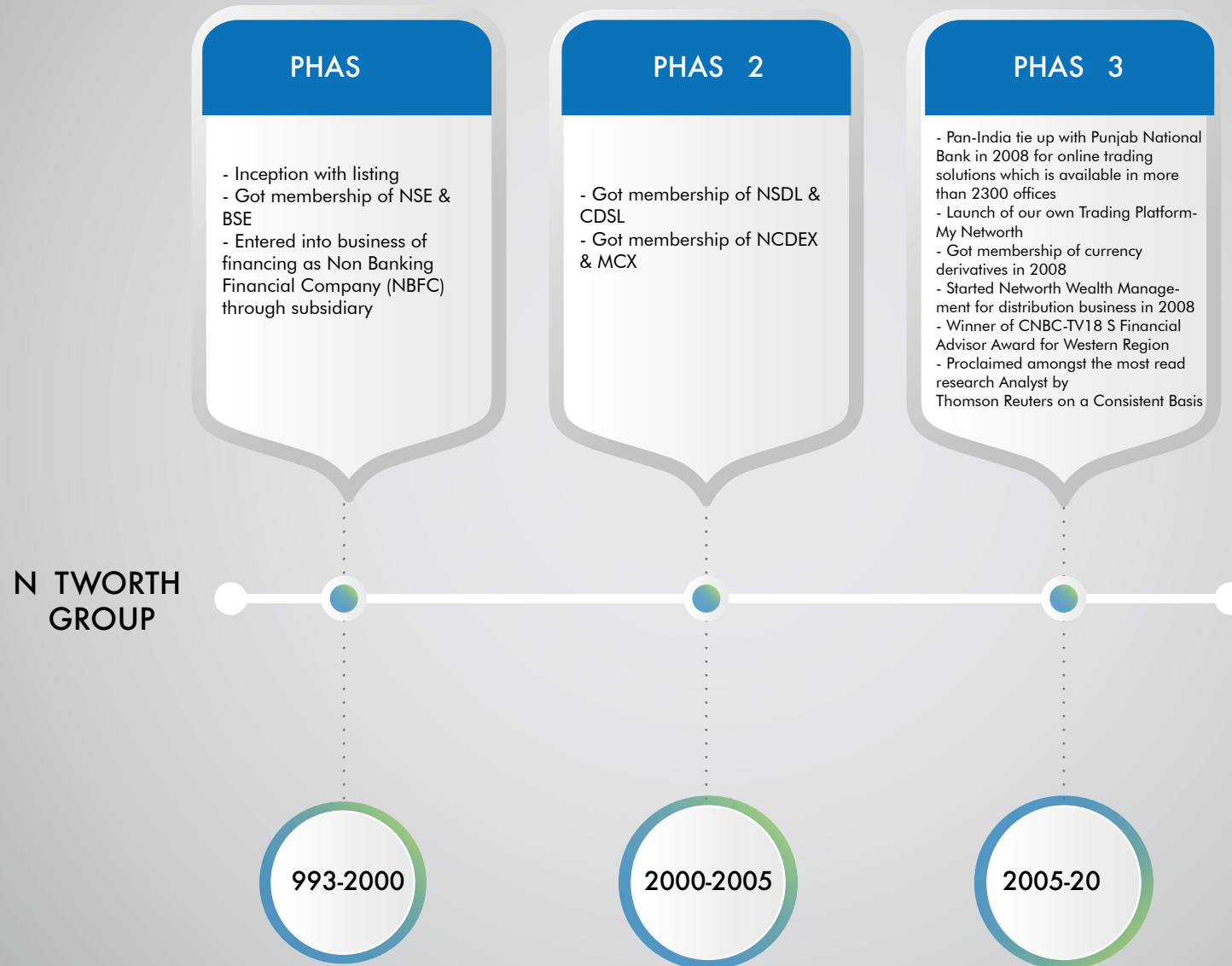
With proven track record of financial excellence and diversified client base including Retail Clients, Corporate Clients, Institutional Clients, HNIs, we are marching on to transform the industry.

With continuous innovation in products, services, technological offerings, and customer engagement models, we are taking customer satisfaction to new heights.

# PROGRESSIVE LANDMARKS



# PROGRESSIVE LANDMARKS





## PROGRESSIVE LANDMARKS

20 TO 20 9

Award of Appreciation of Bond Market in FY 2016-17

Award of Appreciation of IDFC Balanced Fund NFO

Winner of Times Retails Icon 2016-2017 Equity, Commodity & Currency Segment.

Launched "TechExcel" highly Technology Drive Back-office Solution 2017.

Launched Super fast online trading application "moneymaker" in 2017.

Top performer Cash Market NSE 2015-2016.

Best Regional Retail Broker award in AHMEDABAD

Region(Gujarat and Madhya Pradesh) from NSE.

Awarded as Champions forever by ICICI Prudential for outstanding contribution ICICI Prudent Value fund.



20 9

20

20 TO 20 9

Got award of Top Performer in Active Accounts Big DPs) of NSDL Star Performer in 2013 & 2015.

Got Award of Top Performer in New Account - Opened(NON-Bank Category-2nd Position) of NSDL Star Performer in 2014.

Got Merchant banking License in 2006.

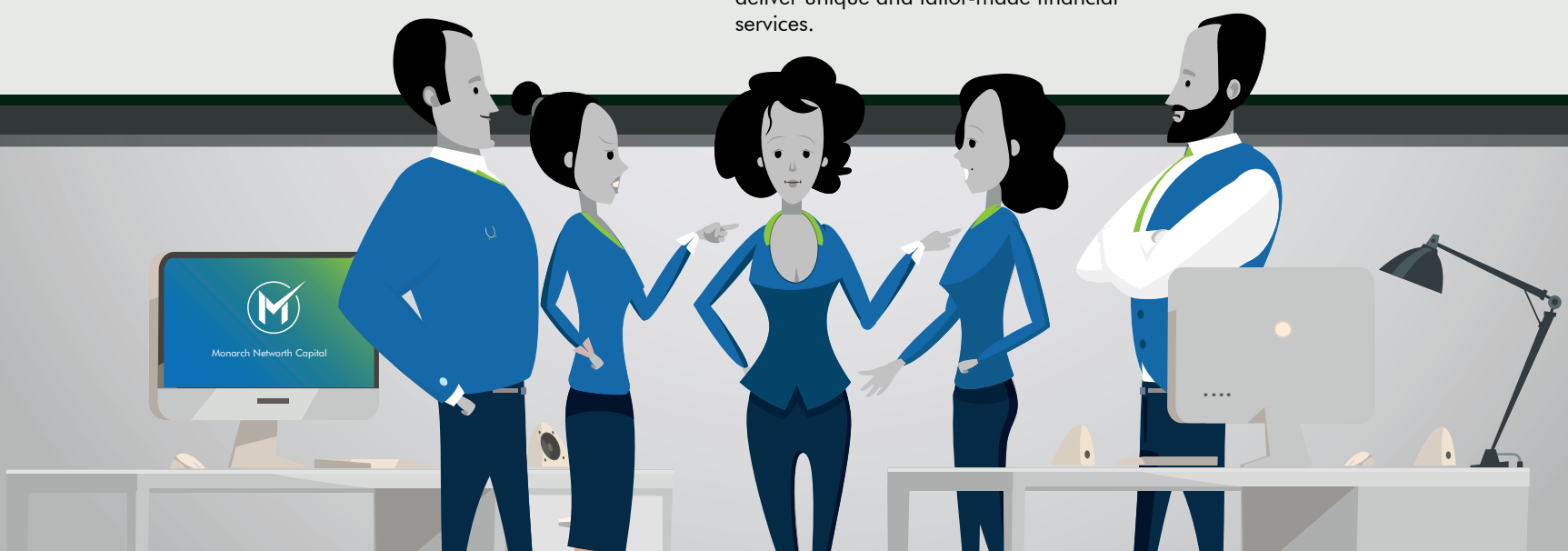
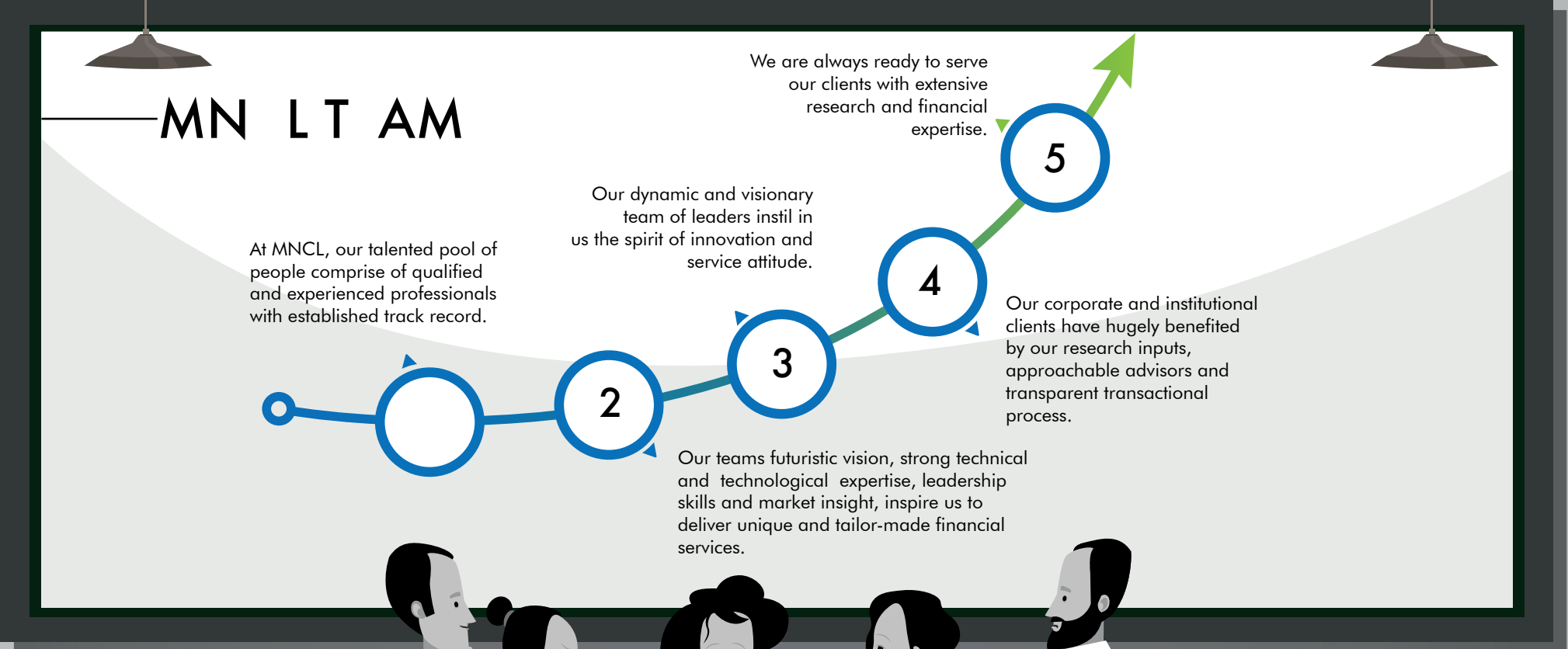
Got Award Leader in go green Initiative of NSDL Star Performer in 2014.

Expanded our operation aggressively in major cities of North India and South India including Remote Places as well.

Empanelled/Serviceing all major AMC's Insurance Companies and Banks with our Investment Ideas and Research Products.



# GENESIS OF A JOURNEY TO SIMPLIFY WEALTH MANGEMENT



## PROGRESSIVE FIGURES OF OUR JOURNEY SO FAR

045  
us in ss  
Asso iat s

89 RAN H  
OFFI S  
A ROSS IN IA

72 SKILL  
PROF SSIONALS  
TO H LP USTOM RS

PR S N IN  
MOR THAN  
226 ITI S  
2 STAT S  
A ROSS IN IA

STRONG  
INSTITUTIONAL  
S TUP OF  
MOR THAN  
77 ANKS 8 LLS  
3FLLS 3  
INSURAN  
OMPANI S

2 30 75  
R GIST R  
LI NT S

A PAN IN IA  
TI UP WITH  
PUNJA NATIONAL  
ANK FOR ONLIN  
TRA ING  
SOLUTIONS  
AVAILA L  
IN MOR THAN  
2300 PN OFFI S





# WHY MNCL? DECISIVE EDGE THAT TAKES YOU CLOSER TO YOUR DREAMS

MULTIPLE SERVICES  
UNDER ONE ROOF

QUALITY RESOURCES  
FOR VALUE INVESTMENTS

INTRA DAY HOT PICKS THROUGH  
WHATSAPP SMS SERVICES

INVESTORSHIP  
FOR CUSTOMER AWARENESS

PERSONALIZED TRAINING  
SERVICES FOR HNI CLIENTS

ONLINE TRAINING THROUGH ONLINE  
AND MONITORING NETWORKS

COMPETITIVE ROYALTY WITH  
TERRITORIES



# WHY MNCL? DECISIVE EDGE THAT TAKES YOU CLOSER TO YOUR DREAMS



INV STM NT A VISORY AN RISK  
MANAG M NT

FFI I NT A K OFFI  
SUPPORT

W KLY N WSL TT R FOR  
MARK T TR N S

24X7 MO IL /W  
AS A K OFFI SUPPORT

INV STOR AWAR N SS  
PROGRAMM S

A I AT OMOMO ITY AN  
URR N Y ALING SK


PR S NTATION ON LAT ST X HANG  
UP AT S AT R GULARV INT RVALS

S MINAR/ IS USSIO N M T AT R GULAR  
INT RVALS ON FA TORS AFF TING  
TH IN IAN ONOMY


TRAINING PROVI FOR N W  
PRO U TS

SU - ROK R USIN SS ASSO IAT M TS  
ORGANIZ FOR IS USSIONS ON  
GROWTH AN XPANSION


# TRANSLATING DATA INTO FRUITFUL INSIGHTS




With methodical approach and  
sensitive tools they translate raw  
data into strong research analysis  
which lays the foundation for  
uniquely successful financial  
strategies




Instant support on any  
stock at a technical level




Fundamental research  
support




Special reports on  
NRI and HNI  
clients



Gets together special reports  
which will aid you in picking  
the right stock at the right  
time



Special reports on  
NRI and HNI clients



At Monarch Norton our team of  
analysts looks at the fundamental  
and technical aspects of all forms of  
research. Our analysts understand  
the various aspects of the Indian  
Financial Market liquidity  
commodity currency and  
International market review  
and are also proficient with  
various research tools



# FUNDAMENTAL RESEARCH DESK

0

Our fundamental research desk follows the bottoms up process for stock picking and also covers small and mid-cap stocks from various sectors and industries.

02

We constantly track the developments and events taking place which are related to particular stocks and sectors

03

We are also in touch with the management teams of Companies to gain better understanding of the stocks under our coverage.

04

Our analysts frequently visit plants, Companies and also attend various management meets, road shows etc. to strengthen their knowledge of stocks under our coverage.

05

Also, frequent interactions take place with CEOs, fund managers and analysts for clarity on markets and stocks in the radar of various institutional investors.

The background of the slide features a stylized illustration of a meeting. Several hands in blue sleeves are shown pointing at a tablet displaying a bar chart with a green line graph, and a spiral-bound notebook. The overall color palette is grey, white, and blue.

## TECHNICAL RESEARCH

Our technical research team uses various quantitative tools for facilitating the process of price patterns identification which can indicate future price fluctuations during various time frames ranging from hourly to daily to weekly to monthly.

Technical studies encompass a range of asset classes like Equities, Commodities & Currencies whereas our technical reports include intraday ideas, morning/opening bell notes, positional trading calls, derivatives analysis, option strategies, pair trading strategies, intra-market analysis, long term technical views, commodity & currency newsletters.

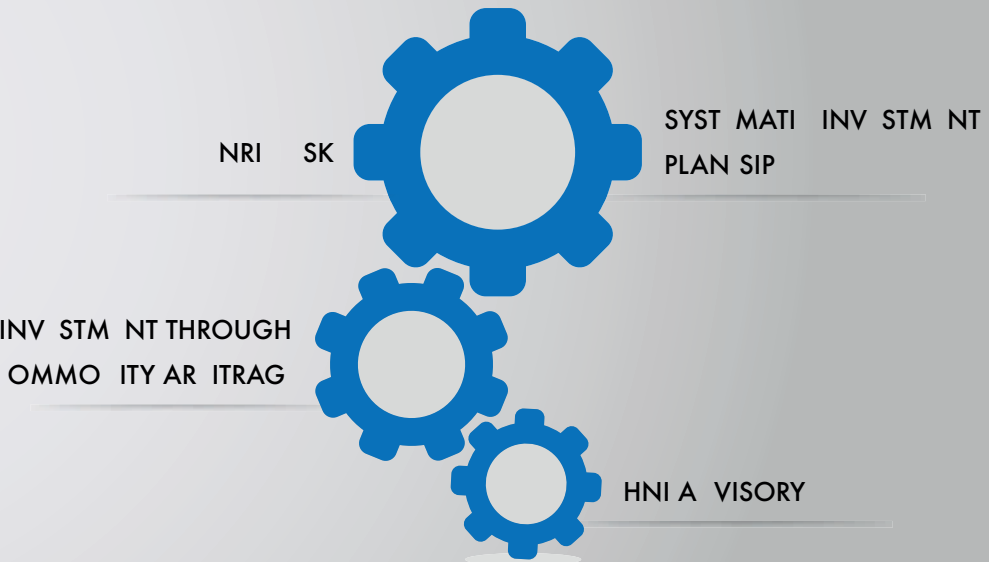
# AN ARRAY OF OPPORTUNITIES TO REALIZE YOUR FINANCIAL QUEST



FINANCIAL PRODUCTIONS

- QUITTING ASH RIVATIVES
- INVESTMENT BANKING
- CURRENTLY COMMODITY RIVATIVES
- IPO FUNDING
- INSURANCE DISTRIBUTION
- MUTUAL FUND DISTRIBUTION
- POSITIVE SERVICES
- MERCHANT BANKING
- LOANS AGAINST SHARES
- TAX FREEDOM SIPS

## FINANCIAL SERVICES





## HARNESSING TECHNOLOGY, HELPING CLIENTS FLOW AHEAD



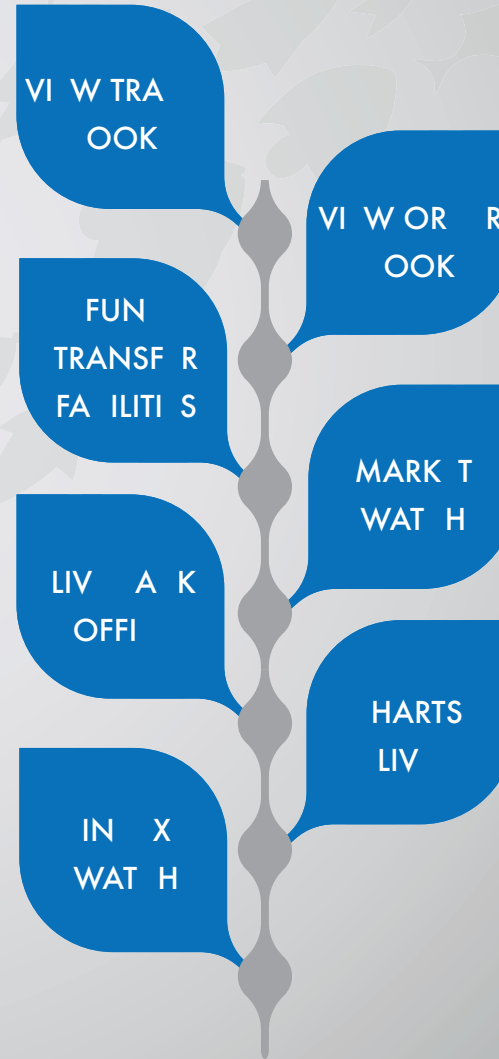
With mobiles emerging as more than just a call device, Mobile Trading is gaining fast acceptance. With growing penetration of internet, increasing demands of 3G and 4G networks, Mobile Trading is becoming a necessity for the modern traders.

To address this need of clients, we have launched our Mobile Trading Platform with all essential features required for fast and accurate trading. Our Mobile Trading Platform provides secure trading.

# HARNESSING TECHNOLOGY, HELPING CLIENTS FLOW AHEAD



## KEY FEATURES OF OUR MOBILE TRADING PLATFORM



# SUCCESS IS AN ENDLESS JOURNEY



FUTURE HOLDS A LOT OF OPTIMISM. WE BELIEVE IN WORKING OUR WAY UP TO THE TOP OF THE PYRAMID RIDING ON SMART FINANCIAL SOLUTIONS AND ROBUST IT PLATFORM.

BY ENGINEERING INNOVATIVE FINANCIAL PRODUCTS AND EFFICIENT PROCESSES, WE ASPIRE TO HELP OUR CLIENTS MAXIMIZE MARKET POTENTIAL AT OPTIMIZED COSTS AT ALL TIMES.

WITH A STRATEGY THAT OFFERS CUSTOMIZED AND PERSONALIZED SERVICES, WE ARE COMMITTED TO ENSURE LONG TERM VALUE CREATION FOR OUR CUSTOMERS, EMPLOYEES AND SHAREHOLDERS.





TAKING EXCELLENCE, WHEREVER WE GO



| STAT S         | RA H S | SU ROK R |
|----------------|--------|----------|
| GUJARAT        | 23     | 417      |
| MAHARASHTRA    | 07     | 209      |
| RAJASTHAN      | 02     | 20       |
| MADHYA PRADESH | 02     | 20       |
| HARYANA        | 02     | 02       |
| PUNJAB         | 02     | 14       |
| DELHI          | 02     | 44       |
| UTTARAKHAND    | 00     | 01       |
| UTTAR PRADESH  | 02     | 35       |
| JHARKHAND      | 01     | 10       |
| WEST BENGAL    | 03     | 37       |
| ORISSA         | 01     | 06       |
| TELANGANA      | 01     | 11       |
| GOA            | 01     | 17       |
| ANDHR PRADESH  | 08     | 90       |
| KARNATAKA      | 04     | 01       |
| TAMIL NADU     | 01     | 20       |
| PONDICHERRY    | 05     | 62       |



Toll free: 1800 22 0223

Email: [reachus@mndlgroupp.com](mailto:reachus@mndlgroupp.com)

Website: [www.mndlgroupp.com](http://www.mndlgroupp.com)

